

SES Mining & Industrial

EXCELLENCE IN ENGINEERING



Southern
Engineering
Services Group

www.sesgroup.com.au





About The SES Group

THE SES GROUP HAS BUILT ITS BUSINESS ON A REPUTATION FOR HIGH QUALITY ENGINEERING SERVICES AND PRODUCTS

Head office for the Southern Engineering Services Group is in Wollongong, New South Wales, with 22 operating divisions located nationally.

SES provides engineering and key product support services to a mix of customers in steel, coal mining and metals mining, fertilizer, heavy materials handling, chemical, construction, general engineering and water treatment process industries.

The Group can provide items from the smallest bolt or 'O' ring to engineered packages for longwall roof support systems.

Within the Group, divisions are quality accredited to ISO 9001:2008. Our experienced staff have appropriate tertiary qualifications in mechanical engineering, along with required industry accreditations, to meet all customer job requirements.

ENGINEERING EXCELLENCE SERVICE & SUPPORT

SES Mining & Industrial, in particular, is proud to represent, support & service, quality, high performance, worldwide brands such as; Hauhinc. Hydra Mining, Thiele, Conflow, Mansign, Boone Supply, Cove Shoe Co and many other pump manufacturers in both the mining and industrial fields.

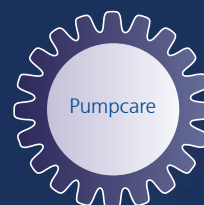
We can draw on the experience and knowledge of all our divisions to better service our customers.

and

Supplier of the Year
Medium to Large Enterprise Award



SES Mining & Industrial - Emerald
SES Mining & Industrial - Kurri Kurri
SES Mining & Industrial - Port Kembla
SES Mining & Industrial - Unanderra



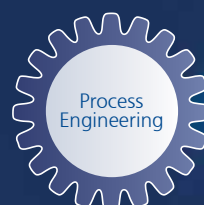
SES Pumpcare International - Kalgoorlie
SES Pumpcare International - Perth



SES Bearings - Unanderra
SES Bearings & Power Transmission - Newcastle
SES Bomond Trading - Sydney
SES Hunter Bearings - Muswellbrook
SES Linear Bearings - Adelaide
SES Linear Bearings - Brisbane
SES Linear Bearings - Melbourne
SES Linear Bearings - New Zealand
SES Linear Bearings - Perth
SES Linear Bearings - Sydney
SES Newvale Engineering - Blacktown



SES Mechanical Engineering Services - Newcastle
SES Power Transmission and Repair - Unanderra



SES Process Engineering - Fairy Meadow
SES Western Australia - Perth

TOGETHER WE CAN DO IT ALL



Pumps

Hauhinco are considered world leaders in the water hydraulic pump and valve industry. They are continuously involved in product development for general industry and underground coal mining. Hauhinco pumps have lead the market in Australia. In Germany, Hauhinco has a 100% market share in the coal mining industry.

Hauhinco sought out Southern Engineering Services Pty Ltd (SES) as their agent due to our vast knowledge and experience with hydraulics in 1984. This partnership, combining a superior product with local expertise & facilities to service, maintain and overhaul pumps, has lead to a winning combination.

Through years of product development SES is particularly proud of it's involvement, leadership and commitment to the design and manufacture of pump stations to ensure that the Australian longwall mining sector has, at all times, the most efficient, safe and reliable pump stations available.

The SES Unanderra workshop comprises 1250 sqm of workshop with a 10T overhead crane and 7T forklift. A 200kW test rig with 13000L capacity enables complete functional testing of all pumps to full running temperature and pressure. A separate rig also tests all valve equipment to full pressure. Also available is a 100T hydraulic press, surface grinder and lathe.

To complement these premises SES also has a 1300 sqm workshop in Emerald complete with test facilities and overhead crane. Our new hardstand and washdown area provide additional facilities for our customers.

Guaranteed fixed costs for servicing and maintenance for all pumps supplied are available.



- Innovation and customisation of hydraulic filter stations using a variety of filtration monitoring technology using all types of filters. High pressure dump valve stations. Also decompression safety systems incorporated in the longwall mining industry.
- Operational & maintenance manuals and safety files with accurate documentation including recommended spare parts listing supplied with all our stations
- All projects in accordance with MDG41 guidelines and necessary certification.



Pumps

INDUSTRIAL PUMPS

We supply & service a wide range of industries such as mining, petroleum, paper, waste water, steel, food, automotive, building services, sewage, chemical, manufacturing, industrial plants.

With both technical and hands on experience from being in the pump industry for a large number of years we can supply, repair & rebuild the following pumps:

Slurry, Vacuum, Helical Rotor, Submersible, Rotojet, Water Hydraulic, Emulsion, High Pressure, Centrifical, Mining, Industrial, Multistage & Mag drive pumps

Prior to repair or rebuild we discover why your pumps failed and with your involvement remedy the cause. We also strive to achieve greater Mean Time between Failure (MTF)

If and when you have a pump issue, please allow us the opportunity to assist in solving the problem and offer a competitive price to complete any work you may have.



FROM THIS



TO THIS



PUMP CARE WA

Sale and hire of all varieties of pumps from the largest industrial applications to small domestic use pumps including:

- Diesel driven Hydro Titan pumpsets used in pit de-watering applications
- Trailer mounted Grundfos high head multistage pumps with on board generator power package
- Centrifugal pumps used for underground shaft de-watering mining operations.





THIELE GMBH & CO KG

Established since 1935 Thiele is one of the world's leading chain manufacturers.

The range of conveying chain and associated products for mining and industrial applications include:

Round link & Flat type chains, Horizontal & Vertical connectors & Flight bars for mining applications. Forged, Bushed & Round link conveying chains for industrial applications, ie. cement plants, steel works, power generation, etc.



SHEARER DRUMS

Hydra Mining Tools design, manufacture and supply shearer drums, cutting heads & cutting tools for mining operations in coal, potash, phosphate, salt, trona etc., worldwide.

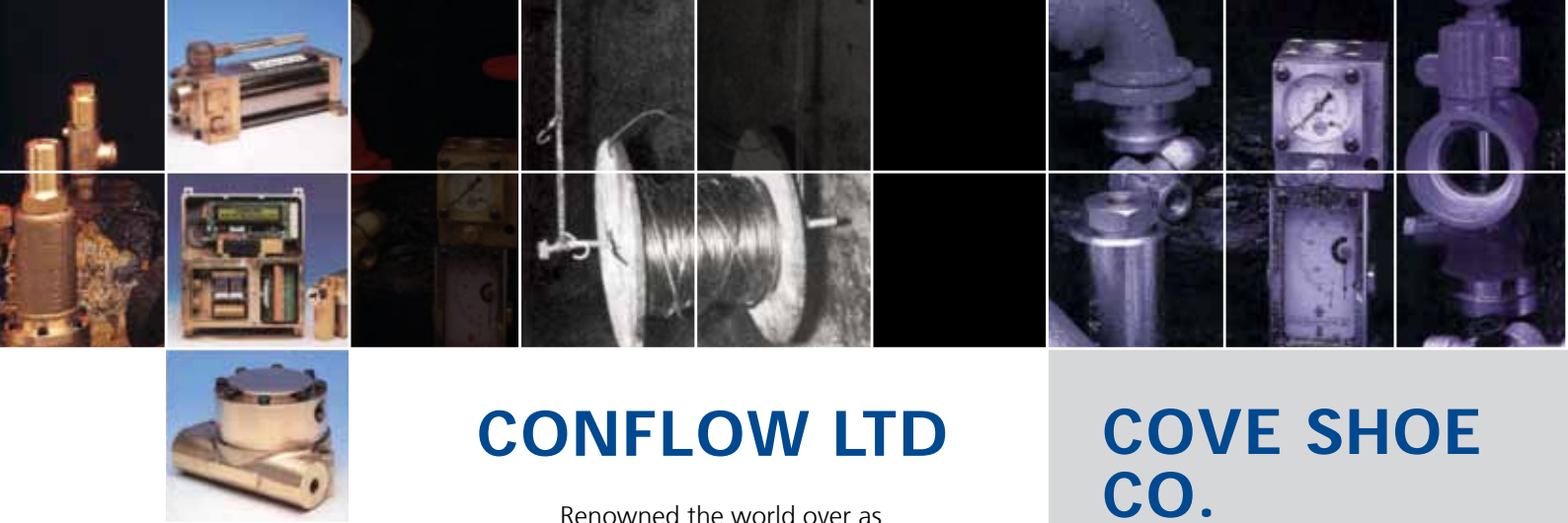
All drums are individually computer designed including performance analysis for optimum cutting and loading and are constructed to withstand the demands of today's high production faces.

Environmental options include dust suppression and incensive sparking control, dust extraction and hollow shaft ventilation.

Any suitable cutting tool and toolholder system can be fitted and drums configured to suit all makes and types of machine.

Drum repair refurbishment or conversion work is a major benefit of working with SES with unparalleled facilities providing a fast quality outcome.





CONFLOW LTD

Renowned the world over as the leading supplier of specialist components and systems for dust suppression, fire suppression and all aspects of water control in mine and quarry applications.

The Conflow product lines include:

- Dust Suppression,
- Pressure Measurement and Control,
- Fire Suppression,
- Flow Measurement and Control,
- Machine Safety Systems,
- Valves and Filtration Equipment.



MANSIGN MINING EQUIPMENT

Leading manufacturer of Nylon Cable Handling Systems for the underground mining industry.

Side-Pull, Centre-Pull and Totally Enclosed Twin Pull Cable Handlers to house and protect the electric cable and water hose which provides power and water to coal cutting machines.

Jumbo Cable Handler to house and protect cables and hoses in the gate roads.

Monorail systems incorporating the above handlers.

COVE SHOE CO.

Matterhorn Miner's Boot designed by miners to offer a waterproof boot that maximises protection, support, comfort and durability in a tough and uncompromising working environment.



BOONE SUPPLY CO.

Manufacturer of various products in flame resistant and non conductive polypropylene rope including:

- Polypropylene Safety Directional Lifeline - available in various lengths
- Polypropylene Multi Purpose Hangers - 6.35mm dia polypropylene hanger for suspending pipes, hoses, cables, vent tubes, etc.
- Polypropylene Restrainer/Tow Rope



Fabrication & Repairs

KURRI KURRI

This facility provides 1500 sqm of workshop floor space and 300 sqm undercover wash down bay and painting area complete with two overhead cranes. The large block enables us to store large volumes of equipment & machinery with excellent truck access complete with loading bay.

- General fabrication from small brackets to large chutes and hoppers. Manufacture new fuel pods, materials' pods & fitter's pods, conveyor equipment, stone dusters, hydraulic hose reelers and many other underground products. Our scope of work includes diesel and electric underground machinery repairs, hydraulic cylinder repairs, hydraulic fault finding and diagnosis.
- We service pump stations located throughout the Hunter Valley and stock a full range of spares and filters for pump and filter stations.
- Equipment Refurbishment: Our large workshop and storage area enables us to supply a cost effective alternative for our mining customers in regards to some equipment that would otherwise go to waste. We pick up from site and refurbish and deliver back to site; conveyor rollers, FRAS hoses, conveyor structure, manifolds, drill steels, valves etc.
- Mobile plant audits and overhauls to assist in meeting the recommendations to MDG41 hose requirements
- General product support in the local area

PRODUCTS

- Hauhinco spares
- Filters
- Tool lockers
- Materials pods
- Fitters pods
- Fuel pods
- QDS attachments
- Transfer Chutes
- Lifeline products
- Pogo Sticks
- Vent Bands
- Poly Products
- Mine Bracketry
- Drift Rope Rollers
- Fras air and water hose
- Air and Water Manifold Systems
- Air Operated Dewatering Pumps
- Fire Hose Reels
- Shearer Clearers
- Conveyor Structure
- Conveyor Rollers
- Conveyor Pulleys
- FRAS Plastic Air Venturi's



PORT KEMBLA

Our newly developed site now includes 3400 sqm, 2 x 3 tonne forklifts, 1 x 12 tonne forklift, 1 x 10 tonne overhead crane, 1 x 25 tonne crane and 3 x 1 tonne wall cranes. Drive through fabrication shop.

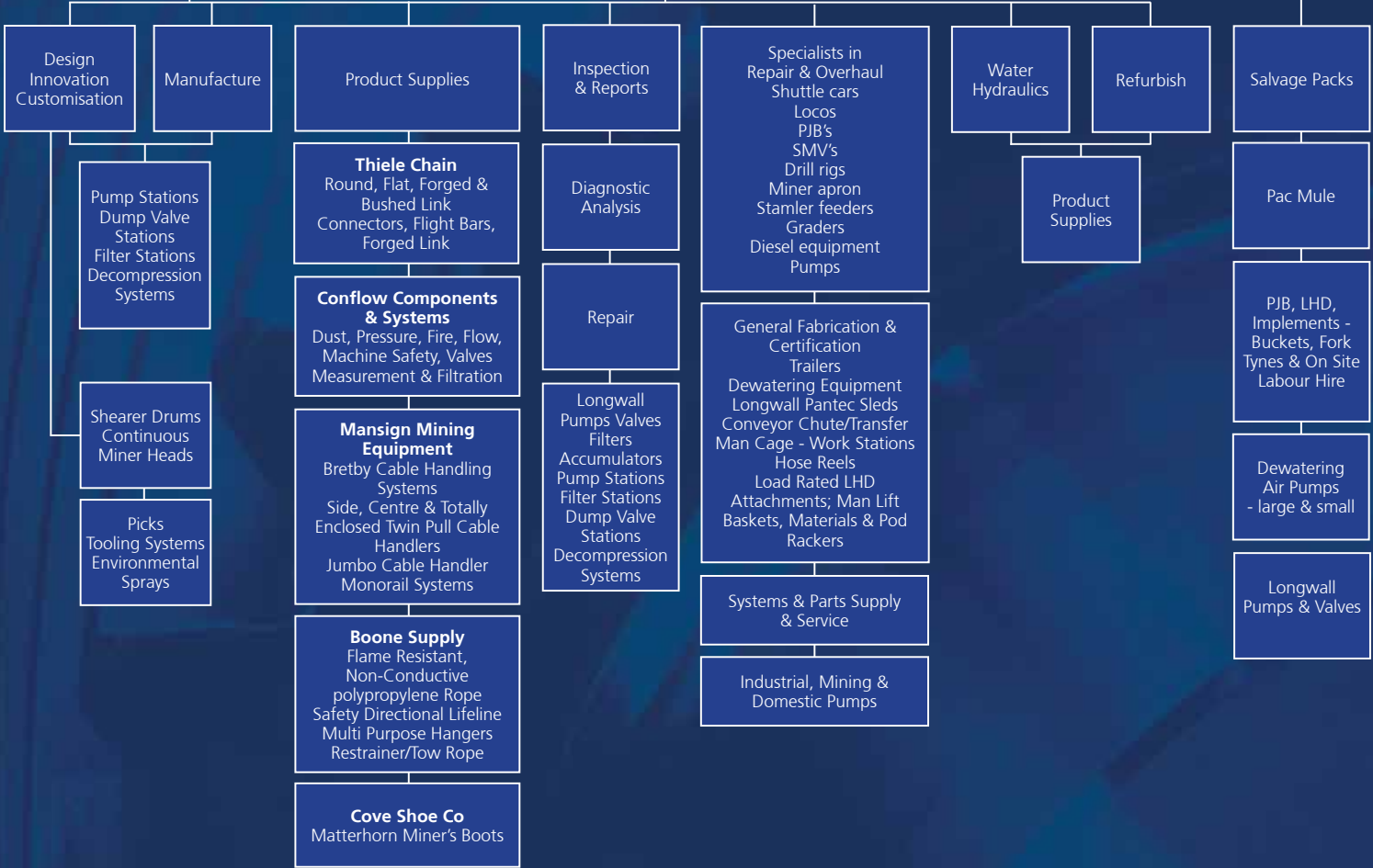
- Specialists in general fabrication, repairs, overhauls of equipment including mining shuttle cars, locos, PJBs, SMVs Stamler feeders, graders, dewatering equipment, longwall pantec sleds, conveyor chute and transfer repairs.
- Load rated LHD attachments, man lift baskets, materials pods, pod rackers and other diesel equipment and pumps.
- Polyurethane products both standard and made to order components.
- Fabrication & certification of trailers suitable for underground use.
- Available for onsite mine maintenance including longwall change shift maintenance and repair coverage.

- 24/7 basis with proven experience in almost all areas of underground coal mining
- Supplier of mine services pipe manifold repair and repair and maintenance of conveyor structures
- Sales of the patented Bearing Defender product, an early warning and bearing failure prevention system suitable for industrial and mining applications.
- We design & supply various styles of hydrants. Manufacture fire, waste water & air hydrants in a number of different styles and colours with or without hose attachments.





SOUTHERN ENGINEERING SERVICES GROUP - MINING & INDUSTRIAL



SES MINING & INDUSTRIAL NSW

11 Prince of Wales Ave, Unanderra 2526. PH 02 4271 1444

36-38 Gloucester Blvd, Port Kembla 2505. PH 02 4276 2322

153 Mitchell Ave, Kurri Kurri 2327. PH 02 4936 4411

QLD

25 Glasson St, Emerald 4720. PH 07 4982 2466



Southern
Engineering
Services Group

www.sesgroup.com.au

TOGETHER WE CAN DO IT ALL